

CATALOG

CONTEMPORARY ART

BETWEEN THE LAYERS

SOLO ART EXHIBITION BY

TAMMY MIKE LAUFER

2017 NEW YORK CITY



GATEWAY ART CENTER NYC

www.artnyny.com



THE CATALOG IS PRINTED IN
A LIMITED EDITION
SIGNED BY THE ARTIST - \$10



TAMMY MIKE LAUFER

Digital Media Artist and Art Director.

Born 1960, Tel-Aviv. Lives and works in Israel.

Founder & Editor of the 44 DEGREES Online Art Magazine.

My works are similar to mental puzzles, where you can travel from one point to another by analyzing a picture's symbolic objects. There is always something for the observer to discover. I never force my vision or push my philosophical opinion on the viewers, each and every one can give their interpretation to my creation.

My art is surreal, all in my head. The viewer is invited to take an intellectual journey to places just as real as those you might find in this reality.

When I start working on a new scene, it's like entering into a fantasy dream, like starting your new world, only virtual. Everything becomes possible, and in the majority of my works I am trying to combine visual realities with subconscious emotions and philosophical thoughts.

I create my virtual world with 3D and 2D paint software. Using combinations of renderings, lightings, textures, and shapes, sometimes in combination with photography.

I have been dealing with digital media for two decades. My digital media works have been exhibited in museums and art projects in places such as Italy (53 Venice Biennale), Greece, Japan, America, Portugal, Lithuania, Poland, and Israel.

ABOUT THE EXHIBITION — BETWEEN THE LAYERS

"I see myself as an artist in this important mission that deals with women striving to smash the glass ceiling."

This exhibit is dedicated to this issue from a personal perspective of the artist, showing different feelings and aspects. Our lives are between physical layers as fabrics, with many obstacles between layers of thoughts. Sometimes a woman wears many layers as obstacles, physical layers as fabrics, as well as layers of thoughts, and sometimes emotional layers. To reveal herself a woman should remove all the layers, not the ones she wears, but the layers that conceal all her thoughts and desires.

We all want to go out into the light, to break out into the world. The sustained way sometimes takes courage to get up and change ourselves, to do something, to change things as they are in the rest of the world. Sometimes you have to swim against the stream.

There is still so much work to be done on the subject of equality between women and men. Although it appears we have progressed, we are still struggling in almost every aspect of life. It is very important to remember to see the light in our lives, even through all the layers. We can close the gap. Never lose hope!

www.Tammymikelaufier.com



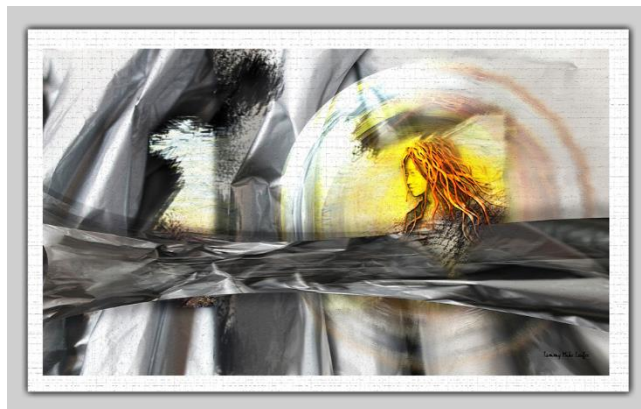


TAMMY MIKE LAUFER

PHOTO PROCESSING COMBINED WITH DIGITAL DRAWING. PRINTED
ON MATERIAL THAT SIMULATES STONE. FRESCO TECHNIQUE. 2017
LIMITED EDITION (6) SIGNED AND NUMBERED.
EACH PRINT 56 X 36 CM. 22" X 14"



FREEDOM OF SPEECH.



IT'S TIME TO GET OUT OF THE LAYERS.



TAMMY MIKE LAUFER

PHOTO PROCESSING COMBINED WITH DIGITAL DRAWING. PRINTED
ON MATERIAL THAT SIMULATES STONE. FRESCO TECHNIQUE. 2017
LIMITED EDITION (6) SIGNED AND NUMBERED.
EACH PRINT 56 X 36 CM. 22" X 14"



RE-GROWTH.



PURPLE FLOWER.

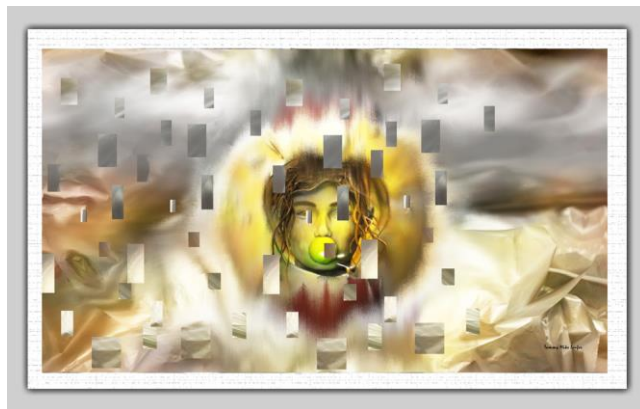


TAMMY MIKE LAUFER

PHOTO PROCESSING COMBINED WITH DIGITAL DRAWING. PRINTED
ON MATERIAL THAT SIMULATES STONE. FRESCO TECHNIQUE. 2017
LIMITED EDITION (6) SIGNED AND NUMBERED.
EACH PRINT 56 X 36 CM. 22" X 14"



TO BREAK BOUNDARIES.



BETWEEN THE LAYERS.



TAMMY MIKE LAUFER

PHOTO PROCESSING COMBINED WITH DIGITAL DRAWING. PRINTED
ON MATERIAL THAT SIMULATES STONE. FRESCO TECHNIQUE. 2017
LIMITED EDITION (6) SIGNED AND NUMBERED.
EACH PRINT 56 X 36 CM. 22" X 14"



DANCE OF LIBERATION .



AGAINST THE STREAM.



TAMMY MIKE LAUFER

PHOTO PROCESSING COMBINED WITH DIGITAL DRAWING. PRINTED
ON MATERIAL THAT SIMULATES STONE. FRESCO TECHNIQUE. 2017
LIMITED EDITION (6) SIGNED AND NUMBERED.
EACH PRINT 56 X 36 CM. 22" X 14"



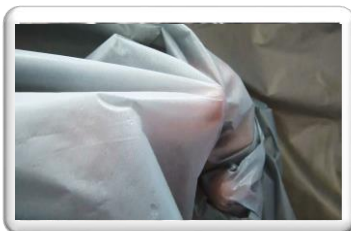
TO GET HIGH.



THE POWER TO BREAK THROUGH.

VIDEO ART

BETWEEN THE LAYERS
ONE PIECE 2017
DURATION 2:00 MIN



KAL-SHAISH - POLYMERIC ACRYLIC PLASTER SHEETS

DIGITIZED PRINTS AND FRESCOS ON A UNIQUE INNOVATIVE MEDIUM!

The multi layered plaster sheets consist of a dense polystyrene foam thermal plaster and the Kal-Shaish uniquely textured layer.

As in the ancient renaissance times when Frescos lined and covered the most amazing structures, this is an innovative fresco like production depicting the simulated cracks and imaging.

The client can order to specifications of their project, different surfaces and designs on any medium.

The unique drying process provides a crack like fresco look that leads to a one and only design, where no two panels are alike.

The digitized printed sheets are light in weight, which make it ideal for interior usage, wall murals and ceiling decorations.

The top layer can provide a surface for different materials such as; wood, drywall, metal and corrugated boards making it ideal for different design industries. Materials and final product are weather resistant and durable.

קלשיש



THE EXHIBITION IS SPONSORED BY

WWW.SHAISSKALL.CO.IL

Doron Kempler

doronkempler@gmail.com

+972-52-3605777

Joseph Rotenberg

shaisskall@gmail.com

+972-52-5114498